



ReliancePremier®
THE JOURNEY GOES ON

10D8N BEST OF NZ SOUTH & NORTH ISLAND

DAY 1 : KUALA LUMPUR → CHRISTCHURCH

DAY 2 : KUALA LUMPUR → CHRISTCHURCH



Haere Mai – Welcome to New Zealand
On arrival Christchurch you will be met and greet by South Island’s Coach Captain

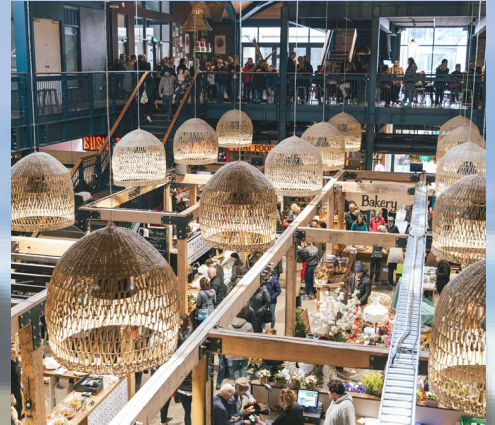
Visit Christchurch Riverside Market

An exciting new attraction consisting of an indoor market, linked to a vibrant network of boutique retail, restaurants, cafes & bars - Riverside is a unique inner-city shopping experience for the local community and visitors to enjoy. There are plenty of restaurants available to savour your thirst and bite. **Buffet Lunch at Garden Restaurant**

Christchurch City Sightseeing Tour

Discover the fascinating history of Christchurch on a half day city sightseeing tour. Take in the sights of the central city and its surrounds and see how this beautiful city is recovering from the devastating 2011 earthquake. You will view some of the areas affected by the earthquakes, see how Christchurch is preserving some of its iconic heritage buildings and learn about the latest plans for restoration of the inner city.

Stop at Canterbury Museum, where you’ll have a chance to explore the country’s cultural and natural heritage, as well as learn about the history of the Canterbury Region. The museum is well known for its natural and human history collections, and there are ongoing exhibitions including stories from the Canterbury Earthquakes, a kids’ natural history centre and an Antarctic Exploration gallery. Dinner at local Chinese Restaurant



DAY 3 : CHRISTCHURCH - ASHBURTON - LAKE TEKAPO



Travel inland route (via the scenic Rakaia Gorge) through South Canterbury to Geraldine. Enroute make a brief stop at Ashburton.

Visit Farmer’s Corner Wholesale Shopping & Alpaca Farm. Provide one stop shop for a large collection of premium New Zealand products and specialty souvenir items. Spacious complex and situated in a tranquil atmosphere with a scenic ambience to the farmland and Southern Alps. Our domesticated Alpacas in our farm is a typical attraction to tourist wherein a close encounter with nut feeding and up-close photos with these gentle animals is definitely an unforgettable moment of your visit.

Continue into the Mackenzie country to arrive at Lake Tekapo.

See the turquoise colour of Lake Tekapo, visit the famous **Church of the Good Shepherd** and the **Bronze Sheepdog Statue**. **Kohan Bento Lunch at local Japanese Restaurant**

Famous for its crystal-clear lake and mountain backdrop, Lake Tekapo/Takapō is situated in the centre of the South Island. A vibrant tourist town fuelled by great food, coffee and adventures, Lake Tekapo/Takapō is a must-do with a friendly local vibe.

Simple relax by the beautiful lakefront or join an optional tour to experience Tekapo Springs Hot Pools. **Dinner at local Chinese Restaurant.**



Day 4 : LAKE TEKAPO – TWIZEL – CROMWELL – TE ANAU

 B/L/D

The easy drive to Twizel takes you through picturesque sheep farming country fringed with mountain ranges. The road to Mt Cook Region hugs the edge of Lake Pukaki. The exquisite opaque turquoise colour of this lake and others in the area is caused by fine, glacier-ground rock particles held in suspension. The landscape is a mixture of high-country tussock, farmland and snow-capped mountains.

Visit Pukaki Lookout Point for a panoramic look at Mt Cook

Visit High Country Alpine Salmon Farm

Visit Mrs Jones Fruits Stall

Jones Family Fruit Stall is one of the best-known fruit stalls in Central Otago, with people coming from all over New Zealand and the world to visit. The fruit stall stocks a huge array of fresh fruits, dried fruits, nuts, honey products and vegetables.

2-Course Lunch at local Restaurant

Once the road exits the gorge as you travel from Cromwell to Te Anau, it enters a wide rolling valley packed with endless vineyards, fruit farms and monstrous herds of sheep, cattle and red deer ... you'll be convinced that you saw a million sheep today!

Dinner at local Chinese Restaurant



Day 5 : TE ANAU – MILFORD SOUND – QUEENSTOWN

 B/L/D

Enter the Eglinton Valley and travel through the breath-taking man-made Homer Tunnel to reach Milford Sound.

Milford Sound Cruise

Enjoy a cruise on this world-famous fiord, dominated by Mitre Peak and the cascading Bowen Falls. **1 x Hot Plated Lunch is included**

The return journey will give opportunity for further sightseeing that may have been missed on the way to Milford.

Dinner at local Chinese Restaurant



Day 6 : QUEENSTOWN

 B/L/D

Visit **Arrowtown** - a village which was once the hurley burley centre of the gold rush. The town has been preserved with its main street still retaining the flavour of the 1860's. Historic miners houses are shaded by tremendous oak trees.

Visit AJ Hackett Bungy – Kawarau Bridge Bungy (43m)

No visit to New Zealand would be complete without a stop at the Kawarau Bungy Centre, The World Home of Bungy, opened in 1988. Nestled into a rock face overlooking the stunning Kawarau River, the view alone will satisfy any crowd. Home of the world's first and most famous of leaps, this 43 metre Bungy Jump is still the most popular Bungy site attracting thousands of thrill-seekers every year.

Wine Cave Tour & Tasting at Gibbston Valley Winery

The tour includes tasting three current release wines in the unique ambiance of the wine cave, blasted out of the solid schist of the Central Otago mountains.

Thai Set Lunch at local Thai Restaurant

This afternoon free time to explore the beautiful Queenstown waterfront or shopping at Queenstown Street Malls.

Dinner at local Chinese Restaurant



Day 7 : QUEENSTOWN – AUCKLAND – HAMILTON – ROTORUA

 B/L/D

Coach transfer Queenstown Domestic Airport

Onboard domestic flight to Auckland (airfare not included) – please book flight before 9am

On arrival Auckland you will be met and greet by North Island's Coach Captain.

Travel south along the Southern motorway, via the Bombay Hills and the market garden area of Pukekohe. Pass by Ngaruawahia, home of the Maori Royal Family. Continue across rich lush countryside and through the dairy farming area of Waikato Province and Hamilton.

Buffet Lunch at local Restaurant

Visit Hamilton Garden – Self Guided Walk

Experience a world of different cultures, beliefs, and design as we visit Hamilton Gardens. Take a self-guided walk and you'll discover much more about the award-winning garden designs created here over the last 30 years. The self-guided walk may take at least 60-75 minutes and reveals the secrets of our most popular themed gardens.

The highway climbs the Mamaku Ranges, goes through Fitzgerald Glade and eventually drops back down towards Lake Rotorua and heading towards the Geothermal City of Rotorua.

Rotorua is a geothermal wonderland. Located within the Pacific Rim of Fire, Rotorua is a region of bubbling mud pools, clouds of steam, and natural hot springs.

3 Course Gold Medal Experience Dinner at Aorangi Peak Restaurant .

Day 8: ROTORUA

 B/L/D

Visit Agrodome Farm Show & Eco Farm/Orchard Tour Combo

Travel onto the **Agrodome** for a one-hour performance. See nineteen sheep breeds introduced onto the stage, the art of sheep shearing, sheepdog demonstrations, cow milking, bottle feed lambs and an exciting sheep auction.

Following the stage show, join the one-hour **Organic Farm Tour** in an all-weather, all terrain vehicles. The Farm Tour is fantastic for children as well as Adults as it offers hands on experience with many exciting close encounters... including Romney sheep, beef cattle, red and fallow deer, llamas, alpacas, ostrich and emus.

Korean BBQ Lunch at local Korean Restaurant

Visit Te Ra - Guided Experience

Just seven minutes from central Rotorua lies the geothermal valley of Wakarewarewa Thermal Reserve and Pohutu geyser. Enjoy a 90-minute guided tour through the greenstone, wood carving and flax weaving schools at the Maori Arts and Crafts Institute, the Kiwi Conservation Centre and the geothermal valley and geyser.

Visit Rotorua Government Gardens and Lakefront

Government Gardens is one of Rotorua's historic landmarks and most popular tourism destinations. You'll want to have your camera on hand for this spot! Originally known as Paepaekumana, the local Māori iwi (tribe) gifted 50 acres of land to the Crown in the late 1800s "for the benefit of the people of the world". The land contained a geothermal area with several therapeutic hot pools.

Hangi Dinner & Maori Concert at Hotel





Day 9: ROTORUA – MATAMATA – AUCKLAND

 B/L/D

It is a short drive north to Matamata. Today the town's main attraction comes from the film industry after the Alexander brothers farm became the Shire in Peter Jackson Lord of the Rings movie trilogy.

Hobbiton Movie Set Guided Tour

A fully guided two-hour tour of the enchanting village at Hobbiton Movie Set. View Hobbit Holes, the Mill and Green Dragon Inn on this Middle-earth adventure. A complimentary beverage is included.

1 x Marquee Buffet Lunch is included

Farewell Middle-earth territory and head north on SH27 through pasture land before continuing on SH2 and joining the Pacific Coastal Highway. Continue passing small rural towns before turning North onto SH 1. See the market garden area of Pukekohe and the Bombay Hills finally reaching Auckland, the 'City of Sails'. Within an area of 360 square kilometres, 48 eruption centres from ancient times have been recognised in the Auckland region with the oldest eruption taking place about 50,000 years ago and the most recent being Rangitoto Island only 600 years ago. The Maori name for the isthmus is "Tamaki Makau Rau" which means "Battle of a thousand lovers" - referring to the tribes that battled over the much-desired land. Auckland is New Zealand's largest city with a population of just over 1 million and is affectionately known as the 'City of Sails'.

Auckland City Sightseeing Tour

Discover first-hand why Auckland is regarded as one of the best places in the world to live, with a half-day tour of its scenic highlights. Travel through the city centre, Auckland's famous Queen Street and cross over the Auckland Harbour Bridge, enjoying views of the Hauraki Gulf and city skyline, and visit the Viaduct Harbour and the revitalised Silo Park waterfront precinct. See historic buildings around the University of Auckland before continuing over Grafton Bridge to the Auckland Domain. The Domain is the city's oldest park and, at 75 hectares, one of its largest.

After visiting the Domain, the tour continues through the boutique shopping area of Parnell Village, where you will make a brief stop, and along the scenic waterfront route of Tamaki Drive. Just above Mission Bay is one of the scenic highlights of your tour: Michael Joseph Savage Memorial Park. Named after one of New Zealand's most revered Prime Ministers, the park, with its formal gardens and tranquil atmosphere, offers stunning views over the picturesque Eastern Bays, Auckland city and the Waitemata Harbour. Your Auckland city tour ends with a trip back along the waterfront, finishing in downtown Auckland. **Fortuna Buffet Dinner at SKYCITY Hotel Auckland**

Transfer to airport for midnight flight to KL

Day 10 : AUCKLAND- ARRIVAL KLIA

 B

Note:

- 1) Sequence of itinerary subject to change
- 2) This is a private and require minimum 15 persons to go
- 3) Tour leader from Malaysia will be arranged
- 4) Return economy class Flight included from KL



10D8N BEST OF NZ SOUTH & NORTH ISLAND



Proposed Flight Details

MAS/Air New Zealand/Singapore Airline
(subject to seats availability)



MEALS INCLUDED

- 08 Breakfast
- 08 Lunch
- 08 Dinner



ACCOMMODATION (LOCAL 3 STAR)

Christchurch	- Ibis Christchurch Hotel (3*) or similar
LAKE TEKAPO	- The Godley Hotel (3*) or similar
TE ANAU	- Distinction Luxmore Hotel (4*) or similar
QUEENSTOWN	- Heartland Hotel Queenstown (3*) or similar
ROTORUA	- Sudima Lake Rotorua Hotel (4*) or similar
AUCKLAND	-Auckland City Hotel (3*) or similar



INCLUSIONS

- Airport transfer in NZ
- Air-conditioned chartered coach with English-speaking driver as specified in itinerary above
- Accommodation as specified above or similar standard
- Full Board Meals
- Sightseeing and attractions Entrance fees as specified



EXCLUSIONS

- Travel Insurance
- Covid-test (If required)
- Entrance fees not mentioned in itinerary
- Personal Expenses
- Tipping to coach captain English-speaking at NZD \$5.00 per day per person
- Any items or services not specified in the itinerary above
- NZ ETA(RM250 per person)

Package price

RM/adult

* Please contact us for actual price as it is subject to airline seats availability

