



TAKE THE TRAIN

Alaskan Discovery by Land & Sea

.....
13 DAYS From Anchorage to Vancouver

TOUR AT A GLANCE

TOUR HIGHLIGHTS

ALASKA RAILROAD Journey aboard the world famous *Alaska Railroad* in Adventure class

DENALI NATIONAL PARK Orientation tour, stay two nights near the entrance of Denali National Park

VALDEZ Glacier cruise on Prince William Sound

ANCHORAGE Sightseeing; visit the Anchorage Museum

HOLLAND AMERICA CRUISE 7-night Inside Passage cruise on the MS *Noordam* or MS *Westerdam*

■ Inside visits and special features are shown in UPPERCASE in the tour description including admission charges where applicable

PROFESSIONAL TOUR DIRECTOR

Transportation: Journey on the *Alaska Railroad* from Anchorage to Talkeetna; Holland America's MS *Noordam* or MS *Westerdam*; private, deluxe, air-conditioned motorcoach while touring

Hotels: Twin-bedded rooms with private bath or shower, hotel taxes, service charges, and tips for baggage handling. Listed hotels or equivalent; see page 94.

ANCHORAGE Dimond Center Hotel (ST), **DENALI NATIONAL PARK** Denali Bluffs (ST), **VALDEZ** Best Western Valdez (ST), **ALASKA CRUISE** Holland America's MS *Noordam* or MS *Westerdam*

Meals: 2 continental breakfasts (CB); 7 breakfasts (B), 6 lunches (L), 7 dinners (D)

📱 Get our mobile app for trip information

MyACCOUNT: Personalise your tour ahead of time with additional excursions. Visit our website for details and conditions.

Add Hawaii before or after your holiday (see page 12)



Day 1 ANCHORAGE. Arrive in Anchorage and make your way to your hotel. This afternoon, you are free to explore the “Last Frontier” on your own.

Day 2 ANCHORAGE-ALASKA RAILROAD-TALKEETNA-DENALI NATIONAL PARK. This morning, board the world-famous *ALASKA RAILROAD* for a memorable train journey to Talkeetna, the jumping-off point for climbers attempting to summit Denali, formerly known as Mount McKinley, the highest peak in North America at 20,310 feet. Enjoy strolling along the shops in downtown or take a walk to the river. Early this afternoon, journey to **DENALI NATIONAL PARK** for a two-night stay. (CB)

Day 3 DENALI NATIONAL PARK. Denali National Park and Preserve majestically dominates the park's 6 million acres. A free day for independent activities. A hike along the many wilderness trails might be of interest. Also take advantage of several optional outings, including a wildlife tour to seek out grizzly bears, caribou, moose, and Dall sheep; a raft trip down the Nenana River; or a helicopter ride over the park. Your Tour Director will have plenty of suggestions.

Day 4 DENALI NATIONAL PARK-THOMPSON PASS-VALDEZ. Relish one last look at the outstanding scenery and wildlife of Denali, before travelling across the Denali



Highway. This seldom-travelled road was the first road to allow access to Denali National Park—a true wilderness with frequent wildlife sightings and amazing views of the Alaska Range. Next, climb over the top of Thompson Pass. Well-known for the annual snowfall in the winter months, the pass offers summer guests unforgettable views. End today's journey in the town of Valdez, nestled between the waterfront and mountains, giving it the nickname, Alaska's Little Switzerland.

Day 5 VALDEZ-WHITTER-PRINCE WILLIAM SOUND-ANCHORAGE. Board a BOAT and travel across magnificent Prince William Sound. Explore the 3-mile face of the mighty Mears Glacier and hear tales of the region as told by the Alaskan crew. Keep your eyes open and cameras ready for marine wildlife such as otters, seals, and whales while viewing spectacular glaciers. Return to Anchorage, Alaska's largest city.

Day 6 ANCHORAGE (EMBARKATION). This morning, a city sightseeing tour of Anchorage, with a visit to the **ANCHORAGE MUSEUM**, where you will see a fascinating display of artifacts of the native people of Alaska. After Anchorage sightseeing, transfer to Seward to board Holland America's MS *Noordam* or MS *Westerdam* for an unforgettable Inside Passage cruise (CB,D)

Day 7 CRUISING: GULF OF ALASKA. A relaxing day at sea provides time to explore the ship's many amenities. Animal and marine life are abundant in this area and, with a little luck, you may spot a pod of mighty yet graceful killer whales. (B,L,D)

Day 8 SCENIC CRUISING: GLACIER BAY. This incredible Biosphere Reserve protects a unique ecosystem, hosting an amazing spectacle as tremendous slabs of ice break off and “calve” into the sea. (B,L,D)

Day 9 HAINES. Nestled along a scenic fjord, Haines features the impressive Sheldon Museum, as well as galleries, shops, and Chilkat Bald Eagle Preserve, where the world's largest gathering of bald eagles occurs each year. (B,L,D)

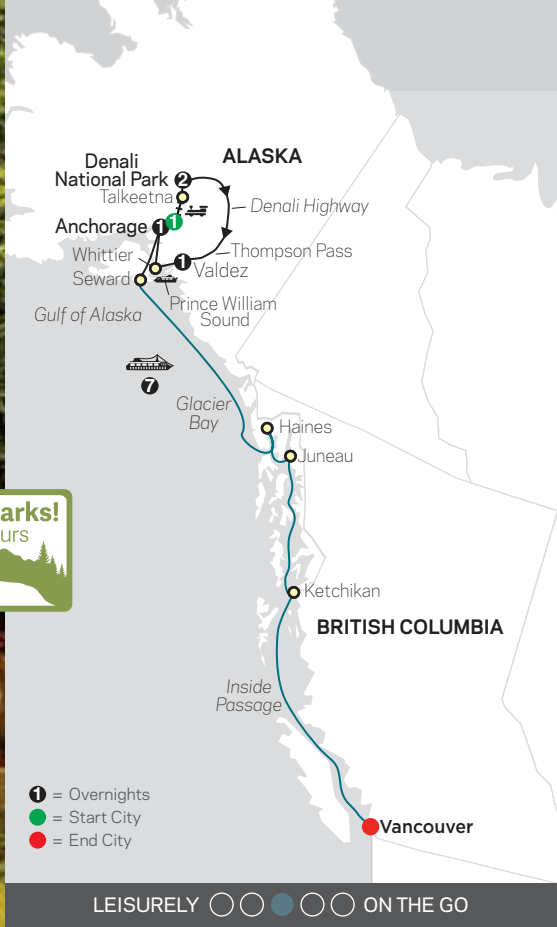
Day 10 JUNEAU. Accessible only by air and water, Juneau's history, native culture, wildlife, and nature come to life here. Shop for gold nuggets, saunter through the swinging doors at the Red Dog Saloon, or visit mighty Mendenhall Glacier. (B,L,D)

Day 11 KETCHIKAN. This self-proclaimed “Salmon Capital of the World” boasts the largest totem collection on the planet and a former red-light district, now art district on historic Creek Street. (B,L,D)

TOUR 8425 Anchorage to Vancouver								AUS	
DEPARTURES	PRICED FROM	DEPARTURES	PRICED FROM	DEPARTURES	PRICED FROM	DEPARTURES	PRICED FROM	DEPARTURES	PRICED FROM
May 26	4145	Jul 07	4508	Aug 04	4508	Aug 25	4242	Sep 01	4235
Jun 16	4375	Jul 21	4508						

Prices are for all land arrangements. Gratuities per person for Tour Director and driver: \$92. Cruise gratuities are additional and paid on board ship. Prices are per person, based on double room occupancy. Single Room Supplement is available from \$2,065, based on date and cabin category. Please call for Triple Room Reduction details and prices. Guaranteed Shares: see page 11. Extra nights before and after your tour may be available; see page 95 for details and prices.

Price is based on inside cruise ship category L; Cabin category upgrades to outside and verandah categories may be available and vary by ship and departure date. For more details, visit our website or contact your travel professional. Cruise line non-commissionable fare, government taxes, and fees of \$609 to \$623, depending on ship/date, are included in cruise extension price.



Day 12 SCENIC CRUISING: INSIDE PASSAGE. One of the most picturesque sea lanes in the world, the natural beauty here is unbelievable, featuring thick emerald-green forests and expansive turquoise glaciers. (B,L,D)

Day 13 VANCOUVER (DISEMBARKATION). Your holiday ends this morning. Please schedule homebound flights after Noon. (B)

NOTES: Cruise itineraries are provided by Holland America Line and are up to date at time of printing. Your travel documents will contain the most current information.

■ **Wildlife in Alaska** is often seen in early season (May-early June).

■ **Visiting and participating in activities in these locations** is subject to favourable weather conditions.

FALL FOLIAGE Enjoy the spectacular colours of Alaska on our special Fall Foliage departures: Aug. 25 to Sept. 1 (if Mother Nature permits).



BEST VALUE TAKE THE TRAIN

Alaska & the Yukon

.....

12 DAYS From Anchorage to Anchorage

TOUR AT A GLANCE

TOUR HIGHLIGHTS

VALDEZ Glacier cruise on Prince William Sound

DAWSON CITY Visit Diamond Tooth Gertie's Saloon; Claim #1; and the Robert Service Interpretive Centre

FAIRBANKS Sightseeing; Trans-Alaska Oil Pipeline; Cruise aboard the sternwheeler riverboat *Discovery III*; Tour the Chena Indian Village with Alaskan Native Guides

ALASKA RAILROAD Journey aboard the world famous *Alaska Railroad* in Adventure class

DENALI NATIONAL PARK Orientation tour, stay two nights near the entrance of Denali National Park

ANCHORAGE Visit the Iditarod Headquarters in Wasilla

■ Inside visits and special features are shown in UPPERCASE in the tour description including admission charges where applicable

PROFESSIONAL TOUR DIRECTOR

Transportation: Journey on the *Alaska Railroad* from Fairbanks to Denali National Park; Holland America's *MS Westerdam* or *MS Noordam* on Tour 8365; private, deluxe, air-conditioned motorcoach while touring

Hotels: Twin-bedded rooms with private bath or shower, hotel taxes, service charges, and tips for baggage handling. Listed hotels or equivalent; see page 94.

ANCHORAGE Dimond Center (ST), **VALDEZ** Best Western Valdez (ST), **TOK** Tok Lodge (ST), or Golden Bear (ST), **WHITEHORSE** High Country Inn (ST), **DAWSON CITY** Downtown Hotel (ST), **FAIRBANKS** Bridgewater Hotel (ST), **DENALI NATIONAL PARK** Denali Bluffs (ST), **ALASKA CRUISE EXTENSION** Holland America's *MS Westerdam* or *MS Noordam*

Meals: On Tour 8360—1 continental breakfast (CB); on Tour 8365—7 breakfasts (B), 6 lunches (L), 7 dinners (D)

📱 Get our mobile app for trip information

MyACCOUNT: Personalise your tour ahead of time with additional excursions. Visit our website for details and conditions.

Add Hawaii before or after your holiday (see page 12)

Day 1 ANCHORAGE. Welcome to Anchorage! Your Tour Director is on hand late this afternoon to answer any questions.

Day 2 ANCHORAGE-WHITTIER-VALDEZ. As you enter Whittier from North America's longest tunnel, the panoramic view of the ocean, mountains, and glaciers greet you. As the gateway to Prince William Sound, this is where you'll board a **GLACIER CRUISE** for an up-close look along the 3-mile face of Mears Glacier, and the epicentre of the Great Alaskan Earthquake of 1964. Watch for eagles, whales, mountain goats, dolphins, and sea lions! Overnight in Valdez, the "Switzerland of Alaska." (CB)

Day 3 VALDEZ-TOK. Leave Valdez, home of the Alyeska Pipeline Terminal, and enjoy views of Bridal Veil Falls, Worthington Glacier, and Thompson Pass. Visit the Wrangell-St. Elias Visitor Center and discover why this vast national park measures in size six times that of Yellowstone National Park, and rises from the ocean to 18,008 feet. Overnight in Tok, the "Dog Sled Capital of the World."

Day 4 TOK-WHITEHORSE. Join the Alaska Highway and follow along the Tetlin National Wildlife Refuge. Skirt the shores of Kluane Lake, once a meeting place for crews constructing the Alaska Highway. Behold spectacular vistas of the rugged mountains of Kluane National Park, home to 19,551-foot-high Mount Logan, Canada's highest peak. The next two nights are in Whitehorse, capital of the Yukon and the territorial headquarters of the Royal Canadian Mounted Police.

Day 5 WHITEHORSE. EXCURSION TO SKAGWAY. Follow the Trail of '98 over the same mountains that thousands of determined gold seekers scaled on foot in the dead of

winter while heading for the Klondike. From Fraser, your Tour Director will suggest an optional train trip on the narrow-gauge White Pass & Yukon Railway to Skagway. Otherwise, continue by motorcoach to Skagway. Stroll the wooden sidewalks past charming false-front buildings and colourful saloons.

NOTE: Operation of the White Pass & Yukon Railway to Skagway is subject to seasonal conditions.

Day 6 WHITEHORSE-DAWSON CITY. Head northwest through the town of Carmacks, once an important supply station for gold seekers on their way to the Klondike. A stop at the Five Finger Rapids, a major obstacle to the hordes of fortune seekers that passed this way. Reach Dawson City, the centre of excitement after the first gold strike in the Klondike in 1896, which led to the world's largest gold rush. Tonight, enjoy the high-flying entertainment of **DIAMOND TOOTH GERTIE'S SALOON**, featuring ragtime music, can-can girls, and an old-fashioned casino.

Day 7 DAWSON CITY. Highlights on your morning sightseeing tour include Bonanza Creek, site of Claim #1, where the first gold strike was made; Robert Service Interpretive Centre, where you'll get a first-hand glimpse into the life of this famous wordsmith, along with genuine Gold Rush era items. Enjoy a photo opportunity at the SS *Keno*, the last sternwheeler to run between Dawson and Whitehorse. The rest of your day is free to soak up the exciting history of this Gold Rush town at your own pace. Perhaps a return to Diamond Tooth Gertie's Saloon is in order?

Day 8 DAWSON CITY-FAIRBANKS. A full day and well worth it, as the scenery is magnificent. Have your camera ready for photo opportunities at Dawson overlook and Top of



LEISURELY ON THE GO

the World Highway, where the motorcoach will re-enter Alaska. Visit one of the last surviving gold rush towns in Alaska before heading west on the Alaska Highway. Stop at an authentic Alaska roadhouse before your evening arrival in Fairbanks.

Day 9 FAIRBANKS. Morning sightseeing features highlights of Alaska's second-largest city and a visit to the Trans-Alaska Pipeline. Board the **STERNWHEELER RIVERBOAT Discovery III** for a leisurely cruise on the Chena River. You will see a bush floatplane take off alongside the boat, visit the home and kennels of the late four-time Iditarod winner, Susan Butcher, and see her champion sled dogs in action. Be immersed into the ancient Athabaskan Indian culture when our Alaskan Native Guides take you on a personalised tour of the **CHENA INDIAN VILLAGE**.

Day 10 FAIRBANKS-ALASKA RAILROAD-DENALI NATIONAL PARK. Board the world-famous **ALASKA RAILROAD** for a memorable journey through untamed wilderness. Sit back in comfort and enjoy spectacular scenery through wide windows. Be sure to take advantage of the domed-roof car. The ride ends in **DENALI NATIONAL PARK & PRESERVE**. North America's highest peak, 20,310-foot Denali, formerly known as Mount McKinley, dominates the park's 6 million acres of glacial streams, river valleys, and multicoloured tundra. After a short orientation tour of Denali, the afternoon is free to explore on your own.

Day 11 DENALI NATIONAL PARK. A free day for independent activities. A hike along the many wilderness trails might be good fun. Also take advantage of several optional outings, including a wildlife tour to seek out grizzly bears, caribou, moose, and Dall sheep; a raft



ALASKA RAILROAD

trip down the Nenana River; or a helicopter ride over the park. Your Tour Director will have plenty of other suggestions.

Day 12 DENALI NATIONAL PARK-ANCHORAGE. Relish one last look at the outstanding scenery and wildlife of Denali before travelling south toward Anchorage. Stop along the way at the **IDITAROD HEADQUARTERS**, home of the great dogsled race. The motorcoach continues to Anchorage and the Dimond Centre for guests extending their stay in Alaska. For guests with homebound flights, the trip ends at Anchorage International Airport. However, with possible delays for weather, we strongly suggest that guests do not book flights prior to 5 pm.

NOTES: Wildlife in Alaska is often seen in early season (May-early June).

■ All those travelling to, or transiting through Canada and the USA, will be required to obtain electronic travel authorisation (eTA) for Canada and ESTA for the USA.

■ Alaska and the Yukon are blessed with exquisite scenery, fascinating attractions, and an extraordinary amount of daylight in the summer months. We take advantage of these extended daylight hours in this vast territory; therefore, some of the travelling days can be long. However, rest assured there are frequent photo and comfort stops.

■ Visiting and participating in activities in these locations is subject to favourable weather conditions.

FALL FOLIAGE Enjoy the spectacular colours of Alaska & the Yukon on our special Fall Foliage departures: Aug. 12-26 (if Mother Nature permits).

TOUR 8360 Anchorage to Anchorage									AUS
DEPARTURES	PRICED FROM	DEPARTURES	PRICED FROM	DEPARTURES	PRICED FROM	DEPARTURES	PRICED FROM	DEPARTURES	PRICED FROM
May 13	3799	Jun 03	4059	Jul 01	4059	Aug 05	4059	Aug 26	4059
May 20	3799	Jun 17	4059	Jul 15	4059	Aug 12	4059		
May 27	3799	Jun 24	4059	Jul 22	4059	Aug 19	4059		

Prices are for all land arrangements. Gratuities per person for Tour Director and driver: \$193. Gratuities for cruise extension are additional and paid on board ship. Prices are per person, based on double room occupancy. Single Room Supplement is available from \$1,337 to \$1,491. Please call for Triple Room Reduction details and prices. Guaranteed Shares: see page 11. Extra nights before and after your tour may be available; see page 95 for details and prices.

*Tour 8365 Price is based on inside cruise ship category L; Cabin category upgrades to outside and verandah categories may be available and vary by ship and departure date. Single Room Supplement is available from \$2,471, based on date and cabin category. For more details, visit our website or contact your travel professional. Cruise line non-commissionable fare, government taxes, and fees from \$602 to \$623, depending on ship/date, are included in cruise extension price.

ADD AN ALASKA CRUISE TO YOUR HOLIDAY
TOUR 8365—19 DAYS
ANCHORAGE TO VANCOUVER



PRICED FROM \$5,342*AU

See extraordinary scenery and wildlife on this unforgettable cruise aboard Holland America's luxurious *MS Westerdam* or *MS Noordam*.

Days 1 to 12 Like Tour 8360. After arrival in Anchorage, transfer to Seward and board your cruise ship this evening. (D)

Day 13 CRUISING: GULF OF ALASKA. (B,L,D)

Day 14 SCENIC CRUISING: GLACIER BAY. (B,L,D)

Day 15 HAINES. (B,L,D)

Day 16 JUNEAU. (B,L,D)

Day 17 KETCHIKAN. (B,L,D)

Day 18 SCENIC CRUISING: INSIDE PASSAGE. (B,L,D)

Day 19 VANCOUVER. Your cruise ends this morning. Please schedule homebound flights after Noon. (B)

NOTE: For details on the ports visited and your cruise ship, refer to page 13. Cruise itineraries are provided by Holland America Line and are up to date at time of printing. Your travel documents will contain the most current information.



TAKE THE TRAIN

Grand Alaskan Adventure

.....

7 DAYS From Anchorage to Anchorage

TOUR AT A GLANCE

TOUR HIGHLIGHTS

ALASKA RAILROAD Journey aboard the world-famous *Alaska Railroad* in Adventure class

DENALI NATIONAL PARK Orientation tour, stay two nights near the entrance of Denali National Park

VALDEZ Glacier cruise on Prince William Sound

ANCHORAGE Sightseeing; visit the Anchorage Museum

■ Inside visits and special features are shown in UPPERCASE in the tour description including admission charges where applicable

PROFESSIONAL TOUR DIRECTOR

Transportation: Journey on the *Alaska Railroad* from Anchorage to Talkeetna; private, deluxe, air-conditioned motorcoach while touring

Hotels: Twin-bedded rooms with private bath or shower, hotel taxes, service charges, and tips for baggage handling. Listed hotels or equivalent; see page 94.

ANCHORAGE Dimond Center (ST), **DENALI NATIONAL PARK** Denali Bluffs (ST), **VALDEZ** Best Western Valdez (ST)

Meals: 3 continental breakfasts (CB)

Get our mobile app for trip information

MYACCOUNT: Personalise your tour ahead of time with additional excursions. Visit our website for details and conditions.

Add Hawaii before or after your holiday (see page 12)



DENALI NATIONAL PARK

Day 1 ANCHORAGE. Arrive in Anchorage and make your way to your hotel. This afternoon, you are free to explore the “Last Frontier” on your own.

Day 2 ANCHORAGE-ALASKA RAILROAD TALKEETNA-DENALI NATIONAL PARK. This morning, board the world-famous *ALASKA RAILROAD* for a memorable train journey to Talkeetna, the jumping-off point for climbers attempting to summit Denali, formerly known

as Mount McKinley, the highest peak in North America at 20,310 feet. Enjoy strolling along the shops in downtown or take a walk to the river. Early this afternoon, journey to **DENALI NATIONAL PARK** for a two night stay. (CB)

Day 3 DENALI NATIONAL PARK. Denali National Park and Preserve, majestically dominates the park’s 6 million acres. Enjoy a free day for independent activities; a hike along the many wilderness trails might be of interest.



VALDEZ

Also take advantage of several optional outings, including a wildlife tour to seek out grizzly bears, caribou, moose, and Dall sheep; a raft trip down the Nenana River; or a helicopter ride over the park. Your Tour Director will have plenty of suggestions.

Day 4 DENALI NATIONAL PARK-THOMPSON PASS-VALDEZ. Relish one last look at the outstanding scenery and wildlife of Denali, before travelling across the Denali Highway. This seldom-travelled road was the first road to allow access to Denali National Park—a true wilderness with frequent wildlife sightings and amazing views of the Alaska Range. Next, climb over the top of Thompson Pass, well-known for the annual snowfall in the winter months, the pass offers summer guests unforgettable views. End today’s journey in the town of Valdez, nestled between the waterfront and mountains, giving it the nickname, Alaska’s Little Switzerland.

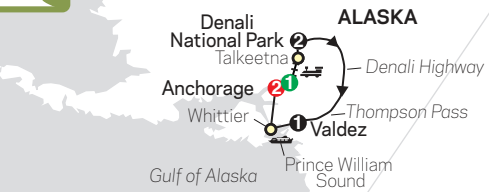
Day 5 VALDEZ-WHITTIER-PRINCE WILLIAM SOUND-ANCHORAGE. Board a *BOAT* and travel across magnificent Prince William

Sound. Explore the three-mile face of the mighty Mears Glacier and hear tales of the region as told by the Alaskan crew. Keep your eyes open and cameras ready for marine wildlife such as otters, seals, and whales while viewing spectacular glaciers. Return to Anchorage, Alaska’s largest city.

Day 6 ANCHORAGE. This morning, join a city sightseeing tour of Anchorage, with a visit to the **ANCHORAGE MUSEUM**, where you will see a quality display of artifacts of the native people of Alaska. The afternoon is free for independent exploring. (CB)

TOUR 8420 Anchorage to Anchorage										AUS
DEPARTURES	PRICED FROM	DEPARTURES	PRICED FROM	DEPARTURES	PRICED FROM	DEPARTURES	PRICED FROM	DEPARTURES	PRICED FROM	
May 26	2499	Jul 07	2579	Aug 04	2579	Aug 25	2579	Sep 01	2579	
Jun 16	2579	Jul 21	2579							

Prices are for all land arrangements. Gratuities per person for Tour Director and driver: \$101. Prices are per person, based on double room occupancy. Single Room Supplement is available from \$812 to \$861. Please call for Triple Room Reduction details and prices. Guaranteed Shares: see page 11. Extra nights before and after your tour may be available; see page 95 for details and prices.



1 = Overnights
● = Start City
● = End City

LEISURELY ○ ○ ● ○ ○ ON THE GO



HARBOUR SEALS

Day 7 ANCHORAGE. Your holiday ends this morning. (CB)

NOTES: *Wildlife in Alaska is often seen in early season (May-early June).*

■ *Visiting and participating in activities in these locations is subject to favourable weather conditions.*

FALL FOLIAGE Enjoy the spectacular colours of Alaska on our special Fall Foliage departures: Aug. 25 & Sept. 1 (if Mother Nature permits).



VANCOUVER

TAKE THE TRAIN

Canadian & Alaskan Masterpiece

19 DAYS From Vancouver to Vancouver

TOUR AT A GLANCE

TOUR HIGHLIGHTS

- VANCOUVER** Sightseeing; Stanley Park
- ROCKY MOUNTAINEER** 2-day scenic rail journey in SilverLeaf Service
- BANFF NATIONAL PARK** Orientation tour; stay two nights inside Banff National Park
- LAKE LOUISE** Sightseeing including Yoho National Park, Natural Bridge, Emerald Lake, and Moraine Lake
- COLUMBIA ICEFIELD** Ice Explorer ride on the Columbia Icefield
- JASPER NATIONAL PARK** Stay two nights inside Jasper National Park
- VICTORIA** Sightseeing; visit Butchart Gardens
- HOLLAND AMERICA CRUISE** 7-night Inside Passage cruise on the MS *Volendam*

■ Inside visits and special features are shown in UPPERCASE in the tour description including admission charges where applicable

PROFESSIONAL TOUR DIRECTOR

Transportation: 2-day, all-daylight rail journey on board the *Rocky Mountaineer*® in SilverLeaf Service; GoldLeaf Service upgrades are

available—see page 25 for details; ferry crossing to/from Vancouver Island; 7-night Holland America cruise on the MS *Volendam*; private, deluxe air-conditioned motorcoach while touring with free Wi-Fi.

Hotels: Twin-bedded rooms with private bath or shower; hotel taxes, service charges, and tips for baggage handling. Listed hotels or equivalent; see page 94.

VANCOUVER Sandman Vancouver City Centre (F) or similar, **KAMLOOPS** Determined by *Rocky Mountaineer* (BA), **BANFF NATIONAL PARK** Banff Inn (ST) or similar, **LAKE LOUISE** Mountaineer Lodge (ST) or similar, **JASPER NATIONAL PARK** Marmot Lodge (F) or similar, **SUN PEAKS** Cahilty Hotel & Suites (F), **WHISTLER** The Listel Hotel (MF), **VICTORIA** Royal Scot Hotel & Suites (F), **ALASKA CRUISE** Holland America's MS *Volendam*

Meals: On *Rocky Mountaineer*—2 breakfasts (B), 2 lunches (L); on Holland America cruise—7 breakfasts (B), 6 lunches (L), 7 dinners (D)

📱 Get our mobile app for trip information

MyACCOUNT: Personalise your tour ahead of time with additional excursions. Visit our website for details and conditions.

Add Hawaii before or after your holiday (see page 12)



LEISURELY ○○○○●○ ON THE GO

Day 1 VANCOUVER. Welcome to Vancouver! Your Tour Director is on hand late this afternoon to answer any questions.

Day 2 VANCOUVER. This morning, an included city tour highlights STANLEY PARK, Chinatown, the harbour, beaches, and more. The remainder of the day is at leisure; your Tour Director will have suggestions. You could take a water-taxi to lively Granville Island with its outdoor markets, street musicians, and waterfront cafés, or visit historic Gastown with its steam-powered clock, antique shops, and art galleries!

Day 3 VANCOUVER-ROCKY MOUNTAINEER-KAMLOOPS. An exciting morning as you board the *Rocky Mountaineer* for a 2-day, all-daylight, classic rail journey. The train travels through some of Canada's most spectacular scenery. Follow the Fraser River through snowcapped mountains, eventually arriving at Kamloops. (B,L)

Day 4 KAMLOOPS-ROCKY MOUNTAINEER-GLACIER NATIONAL PARK-YOHO NATIONAL PARK-BANFF NATIONAL PARK. Reboard the train and prepare for spectacular sights, such as Shuswap Lake, the Monashee Mountains, and GLACIER NATIONAL PARK. Travel through the heart of the Selkirk Mountains before entering stunning YOHO NATIONAL PARK. The train winds through the Spiral Tunnels before climbing Kicking Horse Pass. Cross the Continental Divide and enter the province of Alberta and BANFF NATIONAL PARK. An orientation tour includes Banff's unspoiled beauty. (B,L)

Day 5 BANFF NATIONAL PARK. Today is at leisure. Play golf, horseback ride, hike the many wilderness trails in the area, stroll through Banff, or simply relax at the hot springs. Banff National Park is the perfect place for photographers and wildlife watching, and as a visitor you may be lucky enough to



BANFF NATIONAL PARK



BUTCHART GARDENS



BALD EAGLE

encounter some of these amazing creatures in their natural habitat. The national park is home to 53 species of mammals. The most commonly seen are deer and big horn sheep. If the timing is right, you may spot black bears, grizzlies, or wolves. Your Tour Director will also have suggestions for an optional helicopter ride over the Canadian Rockies and can offer recommendations for dinner.

Day 6 BANFF NATIONAL PARK-LAKE LOUISE. Enjoy a day of scenic grandeur. Travel to Lake Louise and return to Yoho National Park, see the Natural Bridge spanning Kicking Horse River, and visit Emerald and Moraine Lakes. Stay overnight in Lake Louise, where green-blue waters form a perfect mirror reflection of Mount Victoria.

Day 7 LAKE LOUISE-COLUMBIA ICEFIELD-JASPER NATIONAL PARK. Scale Bow Pass for splendid views of Peyto Lake, then climb Sunwapta Pass for stunning vistas of alpine meadows, waterfalls, and massive glaciers. Next stop: the COLUMBIA ICEFIELD to ride the Ice Explorer that travels on ice measuring 750 feet thick.

Day 8 JASPER NATIONAL PARK-MOUNT ROBSON-SUN PEAKS. Stand at the base of the awesome 12,972-foot Mount Robson. Travel through British Columbia's Fur Trade and Cariboo regions for tantalising glimpses of the soaring granite mountains of Canada's Rockies.

Watch for wildlife as you continue to the internationally renowned Sun Peaks ski resort.

Day 9 SUN PEAKS-LILLOOET-WHISTLER. Head south, following the once-treacherous Cariboo Wagon Trail. From Lillooet, "Mile 0 of the Gold Rush Route," our motorcoach will follow the shores of Seton and Duffey Lakes, with a mid-afternoon arrival in Whistler. There are optional activities to choose from, including flightseeing by floatplane over glaciated peaks or a Gondola ride between Whistler and Blackcomb mountains for the perfect bear-spotting perch.

Day 10 WHISTLER-FERRY CROSSING-VICTORIA. Set sail across the Strait of Georgia to Vancouver Island. In Victoria, sightseeing includes BUTCHART GARDENS, the Empress Hotel, Legislative Buildings, Bastion Square, and Thunderbird Park.

Day 11 VICTORIA. A day at leisure gives you the chance to stroll around the harbour, go shopping on Government Street, or have lunch in one of the many pubs. You may choose to join an optional wildlife and whale-watching trip. Cruise the beautiful waters of the San Juan and Gulf Islands, looking for whales, porpoises, seals, and eagles. Your Tour Director will suggest several optional excursions, including a flightseeing excursion with spectacular vistas of downtown Victoria.

Day 12 VICTORIA-VANCOUVER (EMBARKATION). Board your ferry this morning and head back to the Canadian mainland, where you will transfer to Holland America's luxurious MS *Volendam* for a 7-night voyage through the famed Inside Passage. (D)

Day 13 SCENIC CRUISING: INSIDE PASSAGE. Spend the day cruising one of the world's most spectacular waterways. Located along the coast of British Columbia, the Inside Passage is the longest sheltered inland waterway in the world. Watch the water for orcas and humpback whales. (B,L,D)

Day 14 JUNEAU. Located at the foot of grand mountain peaks on Gastineau Channel, Alaska's capital city of Juneau has massive Mendenhall Glacier and the Juneau Icefield at its back door. Visit the rustic shops in town—or get out and kayak, raft, hike, whale watch, flightsee, or fish. There's no end to the adventure because of the long daylight hours. (B,L,D)

Day 15 SKAGWAY. In winter, the sidewalks are all but rolled up in Skagway, so you can imagine the frightful conditions endured by gold prospectors who passed through en route to the Yukon. Take your time and poke your head into every little shop, from the Trail Bench to Lynch & Kennedy's Dry Goods. The Red Onion Saloon, with its honky-tonk piano and costumed barmaids, is a treasure trove of memorabilia featuring pictures of Klondike Kate, Peahull

Annie, and other historic characters. To complete the picture of those rip-roaring days, visit the nostalgic Trail of '98 Museum. (B,L,D)

Day 16 SCENIC CRUISING: GLACIER BAY. Glacier Bay has more actively calving tidewater glaciers than anyplace else in the world. How does it feel when a colossal chunk of ice splits off a glacier and crashes into the sea? The sound is like thunder. The impact shoots water hundreds of metres into the air. You hold your breath as you capture the moment on camera, then you wait for it all to happen again. (B,L,D)

Day 17 KETCHIKAN. Built over the water and up weathered stairways, Ketchikan clings to the shores of Tongass Narrows and drapes the mountains with a hospitable air. (B,L,D)

Day 18 SCENIC CRUISING: INSIDE PASSAGE. Cruise through the awe-inspiring Inside Passage, keeping watch for spouting whales, soaring eagles, and other wildlife. Tonight, enjoy a sumptuous dinner and onboard entertainment. (B,L,D)

Day 19 VANCOUVER (DISEMBARKATION). Your holiday ends this morning. Please schedule homebound flights after Noon. (B)

NOTE: *Cruise itineraries are provided by Holland America Line and are up to date at time of printing. Your travel documents will contain the most current information.*

Your Train



Rocky Mountaineer® travels through spectacular Canadian scenery. SilverLeaf Service features a single-level dome coach offering panoramic views from oversized windows and meals served at your seat. An upgrade to GoldLeaf Service offers luxury reminiscent of a bygone era, including extra hosts, an elegant bi-level dome car, and an a la carte menu featuring freshly prepared regional cuisine, served in an exclusive dining room.

TOUR 8922 Vancouver to Vancouver										AU\$
DEPARTURES	PRICED FROM	DEPARTURES	PRICED FROM	DEPARTURES	PRICED FROM	DEPARTURES	PRICED FROM	DEPARTURES	PRICED FROM	
Apr 25	5822	May 23	6525	Jun 20	6918	Jul 18	6938	Aug 15	6865	
May 02	6385	May 30	6645	Jun 27	6938	Jul 25	6988	Aug 22	6865	
May 09	6385	Jun 06	6788	Jul 04	6758	Aug 01	6988	Aug 29	6732	
May 16	6525	Jun 13	6918	Jul 11	6938	Aug 08	6811	Sep 05	6765	

Prices are for all land arrangements. Gratuities per person for Tour Director and driver: \$178. Cruise gratuities are additional and paid on board ship. Prices are per person, based on double room occupancy. Please call for Single Room Supplements and Triple Room Reduction details and prices. Guaranteed Shares are not available. Extra nights before and after your tour may be available; see page 95 for details and prices. Pricing is based on SilverLeaf Service on the *Rocky Mountaineer*. Upgrade to GoldLeaf Service for a supplement of \$600 to \$760. Please book early, as space is limited. Price is based on inside cruise ship category L; Cabin category upgrades to outside and verandah categories may be available and vary by ship and departure date. For more details, visit our website or contact your travel professional. Cruise line non-commissionable fare, government taxes, and fees from \$672 to \$693, depending on date, are included in price.