



ReliancePremier®  
THE JOURNEY GOES ON

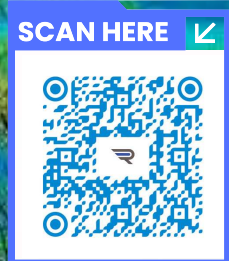


# 6D5N AMAZING JIUZHAIGOU

惊奇九寨沟之旅

PRIVATE TOUR / 私人组团

NO SHOPPING STOP / 全程无购物站



CONTACT US



For More Information  
+603-8326 5099  
+6012-929 7566  
reliancepremiertravel.com

Address:  
L2-02 & L3-02 Netizen Residensi (next to MRT)  
Bandar Tun Hussein Onn Cheras 43200 Selangor



ReliancePremier®  
THE JOURNEY GOES ON

## 6D5N AMAZING JIUZHAIGOU 惊奇九寨沟之旅

### Day 1 - Kuala Lumpur - Chengdu

☰ MOB

Upon arrival at **Chengdu Tianfu International Airport (TFU)** with local representatives. Transfer to hotel and proceed to check-in. Overnight at hotel in Chengdu.

### 第一天 - 吉隆坡 - 成都

☰ 机上用餐

抵达成都天府国际机场 (TFU) 与当地司陪汇合。乘车转至酒店办理手续，入住成都当地酒店。

### Day 2 - Chengdu

☰ B

Breakfast at the hotel and explore **Jinli Ancient Street**, known for its late Qing Dynasty architecture, snack vendors, and cultural landmarks. Visit the historic **Kuanzhai Alley**, dating back 300 years, showcasing Chengdu's traditional charm. In the evening, stroll through **Chunxi Road Pedestrian Street**, the city's bustling shopping and dining hub. Next, explore **Dongmen Ancient Town** with its sunken markets, teahouses, and pavilions, offering a glimpse into old Chengdu life. visit the enchanting **Zhongshuge Bookstore**, famous for its towering bookshelves and 180° mirror reflections, creating a surreal, immersive experience. Overnight at hotel in Chengdu.

### 第二天 - 成都

☰ 早

酒店早餐，游览**锦里古街**，皆以晚清建筑风格闻名，街道两旁的小吃摊与文化地标充满特色。参观拥有300年历史的**宽窄巷子**，感受传统成都的魅力。游在成都繁华的购物与餐饮中心—**春熙路步行街**。随后探索**东门市井**，这里有下沉式集市、茶馆与水亭等，展现了老成都的市井生活。前往迷人的**钟书阁**参观，这里以高耸的书架与180°镜像反射而闻名，营造出一个超现实、沉浸式的体验。入住成都当地酒店。

### Day 3 - Chengdu - Maoxian - Jiuzhaigou

☰ B

Hotel breakfast and start the journey to the scenic **Diexi Lake**, nestled at an altitude of 2,258 meters, once an ancient stronghold. Next, explore **Songpan Ancient Town**, also known as the "Highland Ancient City," which serves as a gateway to popular destinations like Jiuzhaigou and Huanglong. Overnight at hotel in Jiuzhaigou.

### 第三天 - 成都 - 茂县 - 九寨沟

☰ 早

酒店早餐，随后前往位于海拔2,258米的**叠溪海子**，这里曾是一个古代边防重镇。接着，探索被誉为“高原古城”的**松潘古城**，皆是前往九寨沟、黄龙风景区等热门景区的门户。入住九寨沟当地酒店。

### Day 4 - Jiuzhaigou

☰ B

Breakfast at the hotel and spend the day exploring the breathtaking **Jiuzhaigou National Park**, known for its alpine lakes, waterfalls, forests, and Tibetan culture. Start at the newly formed **Shuanglonghai Waterfall**, then stroll through **Shuzheng Valley**, with its string of over 40 shimmering lakes and traditional villages. Continue to **Rize Valley**, home to the tallest waterfall and ancient forests, where you'll also enjoy a **Tibetan-style photography session**, complete with traditional costume and simple makeup. In the afternoon, visit **Zechawa Valley**, featuring the colorful Five-Colored Pond and the serene Long Lake, framed by snow-capped peaks. Overnight at hotel in Jiuzhaigou.

### 第四天 - 九寨沟

☰ 早

酒店早餐，开启一天的**九寨沟国家公园探索之旅**，以高山湖泊、瀑布、原始森林和藏族文化闻名。首先参观地震后新形成的**双龙海瀑布**，随后漫步于有“九寨沟门户”之称的**树正沟**，欣赏串联起的40余个湖泊和藏寨风光。接着前往**日则沟**，这里有九寨沟最高的瀑布与古老森林，并特别安排**藏式旅拍体验**，穿上传统藏服、化上简约妆容，在美景中定格难忘瞬间。下午游览**则查洼沟**，造访如宝石般的**五彩池**和宁静广阔的**长海**，雪山环绕，风光旖旎。入住九寨沟当地酒店。



## Day 5 - Jiuzhaigou - Chengdu

B

Hotel breakfast and visit **Huanglong Scenic and Historic Interest Area**, renowned for its vibrant Huanglong Valley, where over 3,000 terraced ponds create a stunning calcite landscape. After exploring this natural wonder, transfer to **Zhenjiangguan** and board the high-speed train back to Chengdu. Overnight at hotel in Chengdu.

## 第五天 - 九寨沟 - 成都

早

酒店早餐，前往著名的**黄龙风景名胜区**，景区内有着色彩斑斓的黄龙谷，谷中有3,000多个钙华堆积形成的梯田池，构成令人叹为观止的自然景观。游览完这处自然奇观后，前往**镇江关站**，乘坐高铁返回成都。入住成都当地酒店。



## Day 6 - Chengdu - Kuala Lumpur

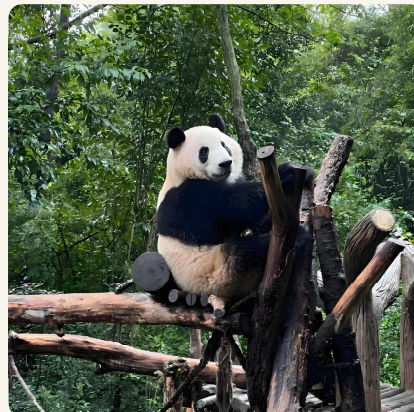
B/MOB

Breakfast at the hotel then visit the renowned **Chengdu Research Base of Giant Panda Breeding**, where you'll learn about the dedicated efforts in giant panda conservation and have the opportunity to observe these adorable creatures up close in their naturalistic habitat. Transfer back to Chengdu Tianfu International Airport (TFU). End tour.

## 第六天 - 成都 - 吉隆坡

早/机上用餐

酒店早餐，前往著名的**成都大熊猫繁育研究基地**参观，了解工作人员为大熊猫保护所做出的不懈努力，并近距离观赏这些憨态可掬的国宝，在仿野生的环境中感受它们的可爱与魅力。随后並返回成都天府国际机场 (TFU)。结束行程。



\*\* Sequence of the itinerary is subject to change based on the weather and traffic condition, or any changes made by the local authority \*\*

\*\* 行程顺序可能根据天气、交通状况或当地旅行社的任何变更而调整。 \*\*



PROPOSED FLIGHT  
航班选项

*Batik air*



四川航空  
SICHUAN AIRLINES

AIR CHINA  
中国国际航空公司

(subject to seats availability)  
(视座位情况而定)

### INCLUSIONS

- 5 nights hotel at standard room category (Twin share basis) with daily breakfast.
- Private Tour with Professional Chinese/ English Speaking Guide and transportation.
- Entrance Fees and Meals as indicated in itinerary.
- No shopping stop.
- International Flight (Direct Flight).
- Tipping.
- China Visa Free (Valid for Malaysian).

### EXCLUSIONS

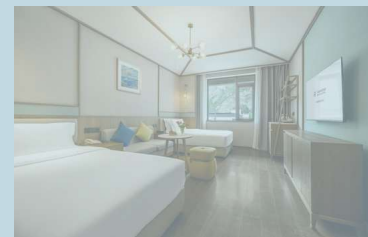
- All personal expenses and other services not specified in itinerary.
- All Covid tests expenses.
- Travel Insurance.



Local 4\* or similar  
当地4\*或同级

CHENGDU / 成都 3N  
Holiday Inn Express Chengdu  
North Station  
成都北站智选假日酒店

JIUZHAIYOU / 九寨沟 2N  
Jiuzhaigou Rezen Hotel  
九寨沟千鹤丽呈酒店



### Package Price

Including return flight from Kuala Lumpur  
(Estimated)

配套价格

包含吉隆坡往返机票 (预估价)

\* Please contact us for actual price as it is subject to airline seats availability & peak season.  
\* 实际价格请联系本公司确认，因机位有限且旺季期间价格可能有所调整。

### IMPORTANT NOTES:

- The sequence of the itinerary is subject to change based on actual travel arrangements and operational considerations.
- This tour operates on a private tour basis with a minimum of 6 persons to go, and daily departure is available, subject to availability.
- Local ground arrangements are subject to traffic and weather conditions; alternative plans may be implemented as necessary.
- This package is based on a standard category and is not classified as luxury or deluxe.
- Accommodation is arranged in local 4-star standard hotels. Upgrades to local 5-star hotels are available upon request and may incur additional charges.
- Tour departures avoid China public holidays and Golden Week (blackout period applies).





### Tour Inclusions

- **Accommodation:** 5 nights in standard room category (Twin share basis) with daily breakfast.
- **Private Tour:** Includes a professional Chinese/English-speaking guide and transportation throughout the tour.
- **Entrance Fees and Meals:** All entrance fees and meals as specified in the itinerary are included.  
\*\* For groups of 2 to 8 participants, meal arrangements, including lunch and dinner, are not included in the tour package. \*\*
- **No Shopping Stops:** The tour does not include any designated shopping stops.
- **International Flight:** Direct international flight is included.
- **Tipping:** Tips for guides and drivers are included.
- **China Visa:** Visa-free entry for Malaysian citizens.

\*\* According to the recent regulations released by the Malaysian and Chinese governments, Malaysian passport holders are eligible for a 15-day visa-free entry to China until 31st December 2025, 23:59. \*\*

### Tour Exclusions

- **Personal Expenses:** All personal expenses and services not specified in the itinerary.
- **Covid-19 Tests:** Any costs associated with Covid-19 testing.
- **Travel Insurance:** Travel insurance is not included and should be arranged by a travel consultant separately.

### Remarks

- **Pricing Validity:** Prices quoted are valid only for Malaysian citizens.
- **Reservations:** Currently, airline seats and hotel accommodations are not reserved. Airline quotations are subject to change, and seat availability is on a first-come, first-served basis.
- **Itinerary Changes:** The sequence of the itinerary is subject to change based on actual travel arrangements.
- **Group Size Reduction:** If the proposed group size is incorrect and subsequently reduced, the pricing will be adjusted accordingly. The tour price will be recalculated to reflect the new group size, which may result in a slight increase in the per-person cost.

### 旅游包含事项

**住宿:** 五晚标准房型（双人大床间）包含每日早餐。

**私人旅游:** 包含专业的中文/英文导游讲解与全程交通服务。

**门票与膳食安排:** 包括行程中指定的所有景点门票与膳食安排。

\*\* 针对于2至8人成团，膳食安排，包括午餐与晚餐，将不包含在配套中。 \*\*

**全程无购物站:** 此行程不包括任何指定的购物站。

**国际航班:** 包括直飞国际航班。

**小费:** 包括导游与司机的小费。

**中国签证:** 马来西亚公民免签。

\*\* 根据马来西亚与中国政府最近发布的规定，马来西亚护照持有人可享有15天的免签入境中国优惠，有效期至2025年12月31日23:59。 \*\*

### 旅游不包含事项

**个人费用:** 所有个人费用及行程中未列明的服务。

**新冠检测:** 与新冠检测相关的所有费用。

**旅行保险:** 旅行保险不包含在内，需另行由旅行顾问安排。

### 备注

**价格有效性:** 报价仅对马来西亚公民有效。

**预订情况:** 目前尚未预订航空座位与酒店住宿。航空报价可能会发生变化，座位以先到先得为准。

**行程变动:** 行程的顺序可能会根据实际旅行安排进行调整。

**团体人数减少:** 如果拟定的团体人数不准确且随后减少，价格将相应调整。配套价格将会重新计算，以反映新的团体人数，这可能会导致每人费用略有增加。

